



# School & Daycare Newsletter

• Monthly Bulletin for Staff •

The duties of a teacher are neither few nor small, but they elevate the mind and give energy to the character.

Dorothea Dix



## Newsletter Topics:

- ◆ Page 2 & 3: Announcements
- ◆ Page 4: Reminders
- ◆ Page 5: COVID-19 Resources
- ◆ Page 6: Immunization Services
- ◆ Page 7: Reproductive Health Services
- ◆ Page 8: Staff Contact Information

- Key:
- DPI (Wisconsin Department of Public Instruction)
  - DHS (Wisconsin Department of Health Services)
  - CDC (Centers for Disease Control & Prevention)
  - CCHD (Clark County Health Department)



# Announcements

## First Pediatric Influenza-Associated Death in Wisconsin

### Encourging Everyone 6 Months and Older to Get Vaccinated

"DHS has confirmed the first pediatric influenza-associated death in Wisconsin for the 2022-2023 season. Nationwide, 30 pediatric influenza-associated deaths have been reported.



DHS encourages all Wisconsinites, especially children, to get vaccinated against the flu as soon as possible. Early data show this year's flu vaccine is a match to current circulating influenza strains and will prevent or reduce symptoms of influenza infection."

View the full press release [here](#).

## January: National Radon Action Month

### Radon Testing Available Through Health Department

All residents should test their homes at least once for the presence of radon gas.

- What is Radon? It is a naturally occurring radioactive gas that originates from the decay of uranium found in rocks, soil, and water. It is expelled from the ground, and can enter the home through foundation cracks, openings around joints and pipes, and dirt floors.
- 1 out of 100 Wisconsin Homes Have High Radon
- Radon gas is invisible, odorless, and tasteless.
- Long-Term Exposure = Significant Risk Factor for Lung Cancer
- Each Year Radon Gas Claims About 1,200 Lives

The only way to know if you have radon in your home is to conduct a radon test. Testing is simple, quick, and inexpensive. Test kits are available through the Clark County Health Department for \$10 (\$2 extra for shipping).

- Questions? 715-743-5105 (Radon = Option 4)

## New Clark County Health Department Immunization Location

### St. Bernard Catholic Church - Abbotsford

Staff will be available on the 2nd Thursday of odd months from 2:00pm to 4:30pm to provide immunization services. Staff hope to provide more Health Department services at this location in the future. Refer to the Immunization Services page for more information.





# Announcements

## Youth Risk Behavior Survey

### Requesting Schools to Participate

The Youth Risk Behavior Survey (YRBS) is an important tool in understanding the risk and protective behaviors of Wisconsin young people. YRBS is conducted by DPI as part of a national effort by the CDC. YRBS results are vital for the DHS Maternal and Child Health team, as well as local partners (such as local health departments), in completing community health improvement planning, community health assessments, and securing grant funding to address needs.

**Registration for the 2023 YRBS is currently open**, and we strongly encourage all public and private school districts with students in grades 6-12 to participate. Click [here](#) to register for the 2023 YRBS. **Registration is open until January 31, 2023.**

School results are not shared publicly, and are not used to compare one school to another. County level results are only shared when a sufficient number of schools participate to prevent identification of a single school or district.

Additional Resources:

- [YRBS Talking Points](#)
- [Commonly Asked Questions and Answers](#)
- [2021 Results](#)

## Public Health Workforce Development Grant

### Response to Questions

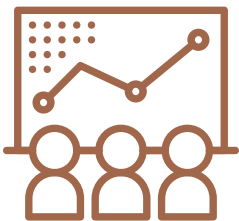
Below are two documents that describe additional professional development opportunities/courses that school nurses may complete as part of the Public Health Workforce Grant awarded by CDC and DHS, and administered by the 12 CESAs.

- [Strategy Explanation for Public Health Workforce Development Grant](#)
- [Workforce Grant FAQ](#)

## Big Dreams, Better Communities Grant

### Awards to 36 Out of 63 Applicants

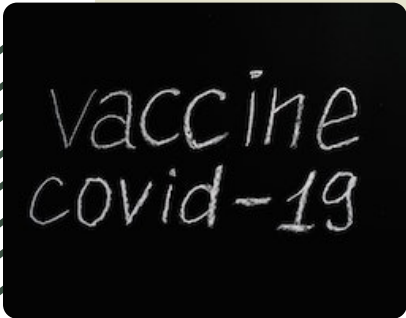
The CCHD, under the direction of the Clark County Board of Health, is pleased to announce that 63 total requests were received from non-profit entities throughout Clark County. Out of 63 requests, 36 total entities were awarded, with a total amount awarded together equaling \$100,000. We appreciate everyone's commitment and dedication to our communities. Click [here](#) for more information.





# Reminders

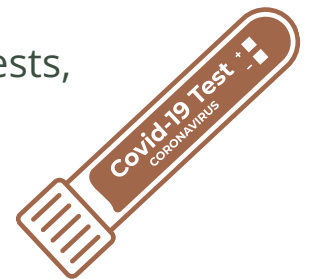
## Abbotsford COVID-19 Vaccine Site



- The AMI Marathon-Abbotsford COVID-19 vaccination site at the Abbotsford City Hall ended on 12/15/22.
- See our Immunization Services page for CCHD vaccine locations, or visit [vaccines.gov](https://www.vaccines.gov) to search for other COVID-19 vaccine locations.

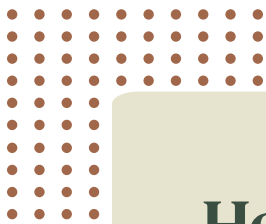
## COVID-19 At-Home Test Kits

- Schools/districts can order at-home rapid antigen tests to be distributed to students and staff. Click [here](#) to learn more.
- Adults can also order a free package of five rapid antigen tests, per month, for their household at [Say Yes Covid Test!](#)



## Communicable Disease Outbreaks

- With the increase of respiratory illnesses in Wisconsin, it is important for schools and daycare to have a plan to address respiratory outbreaks.
  - [COVID-19 Outbreak Definition](#)
  - [DHS Disease Reporting Requirements](#)



## Clark County Health Department Programs and Services

The following pages include information about some of the programs and services that the Clark County Health Department has to offer.

## Louise Wilson School Nurse DPI Office Hours



Third Friday of Each Month

8:00am-9:00am

### Join [Zoom](#)

Meeting ID: 898 5613 6209

Passcode: 357787

Call-In: 1-309-205-3325



---

---

# COVID-19 Resources

---

---

## Wisconsin Department of Instruction (DPI)

[COVID-19 Infection Control and  
Mitigation Measures for Wisconsin  
Schools 2022/2023](#)  
Last Updated: 8/12/2022

## Wisconsin Department of Health Services (DHS)

[K-12 Schools](#)  
Last Updated: 8/12/2022  
[Early Care and Education Programs](#)  
Last Updated: 8/16/2022

## Centers for Disease Control & Prevention (CDC)

[Schools and Childcare Programs](#)  
Last Updated: 10/25/2022

[Operational Guidance for K-12 Schools  
and Early Care and Education  
Programs to Support Safe In-Person  
Learning](#)  
Last Updated: 10/5/2022

## Wisconsin Department of Children & Families (DCF)

[COVID-19 Childcare Resources](#)

## Clark County Health Department (CCHD)

[COVID-19 \(Coronavirus\)](#)

[Isolation & Exposure Infographic](#)



Questions on  
COVID-19 Cases?  
Please email:  
[contact.tracers@co.clark.wi.us](mailto:contact.tracers@co.clark.wi.us)

---

---





# Immunization Services

Appointments Strongly Encouraged - Walk-Ins Welcome

Immunization Hotline: 715-743-5292

### Clark County Health Department (Neillsville)

- Every Monday
- 2:30pm to 4:00pm

### Clark County Rehab & Living Center (Owen)

- Second Wednesday of Every Month
- 3:00pm to 4:00pm

### St. Bernard Catholic Church (Abbotsford)

- Second Thursday of Odd Months
  - 2:00pm to 4:30pm
- Food Pantry Hours  
2:00pm-4:00pm  
Click [here](#) for more information.



## Vaccines for Children (VFC)

Children through age 18 can be vaccinated, free of cost, if they meet any of the criteria below:

- Enrolled or eligible for Medicaid.
- Do not have health insurance.
- Have health insurance, but vaccines are not covered, or only some vaccines are covered.
- American Indian or Alaska Native

## Vaccines for Adults (Age 19+)

Adults can be vaccinated, free of cost, if they meet any of the criteria below:

- Do not have health insurance.
- Have health insurance, but vaccines are not covered, or only some vaccines are covered.

## COVID-19 Vaccine

The following Moderna COVID-19 vaccines are available free of charge.

- Primary Series (Age 12+)
- Bivalent Booster (Age 6+)

## What vaccines are available?

### Children

- DTaP
- Hepatitis A
- Hepatitis B
- HIB
- Polio
- MMR
- Varicella
- Pneumococcal
- Rotavirus
- HPV
- Meningococcal
- Tdap
- Td

### Adults

- Tdap
- Td



## Influenza (Flu) Vaccine

### Children

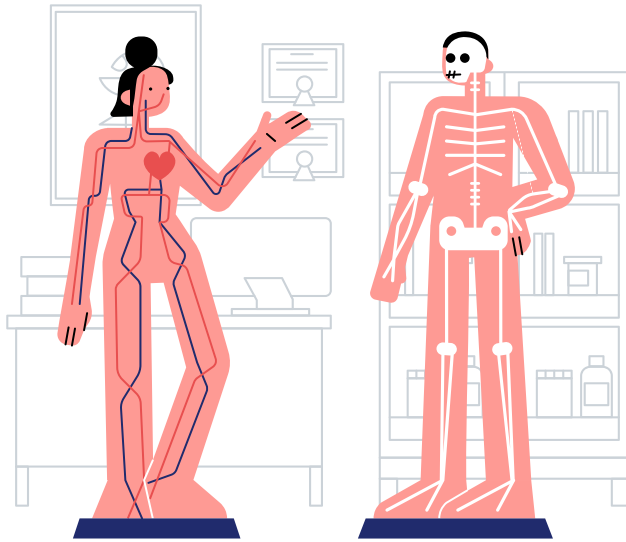
- Available for those age 6 months through 18 years if meet VFC criteria.

### Adults

- Available for those age 19+ with certain insurance plans, or private pay cost of \$40.



# Reproductive Health Services



**ALL  
SERVICES  
ARE  
CONFIDENTIAL**



## Available Services

Services are available to men and women of reproductive age. Free services and supplies available to those who qualify. Financial assistance available.

- Sexual Transmitted Infection (STI) Testing
- Pregnancy Testing
- Condoms
- Oral Contraceptives
- Depo Injection
- Other Birth Control Options
- Plan B
- Referral Options

## Expanding Services in 2023

CCHD is pleased to announce that reproductive health services in 2023 will be expanding to include on-site Nurse Practitioner (NP) services, which may include:

- IUD or Nexplanon (Long-Acting Reversible Birth Control Methods)
- PAP/Pelvic Exams
- Other NP Consultation Services

**Start Date: TBD**

## Location & Availability

Services are available in Neillsville Monday-Friday, 8:00am-4:00pm via appointment.

In unique circumstances, a reproductive health nurse can provide services on-site to students at school, or other CCHD off-site locations.

## Education Available to Schools?

Upon request, CCHD staff members can provide **puberty** education (45 minutes - 1 hour class period) to 4th or 5th graders (recommended for 4th graders).

- To request, contact [Katie Cook](#).

Upon request, CCHD staff members can provide **sex education** (45 minutes - 1 hour class period) to high school age students.

- To request, contact [Kelsey Wussow](#).

## Questions?

Individuals are encouraged to contact Kelsey Wussow with any questions, concerns, etc.

**Office:** 715-743-5113 (Call Only)  
**Work Cell:** 715-937-4303 (Call or Text)



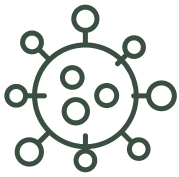
---

# Staff Contact Information

---



Clark County Health Department Staff Members



## COVID-19 Team

- Autumn Marshall (Contact Tracer): 715-743-5291
- Laura Garcia-Torres (Contact Tracer): 715-937-5818
- Marisol Garcia (Contract Tracer): 715-743-6517



## Not Sure Who to Contact?

Contact Corrine Spencer (Public Health Nurse)

- Work Cell (Call or Text): 715-937-4303
- Office: 715-743-5107



Looking for specific information to be included in this monthly newsletter?

Contact: Corrine Spencer