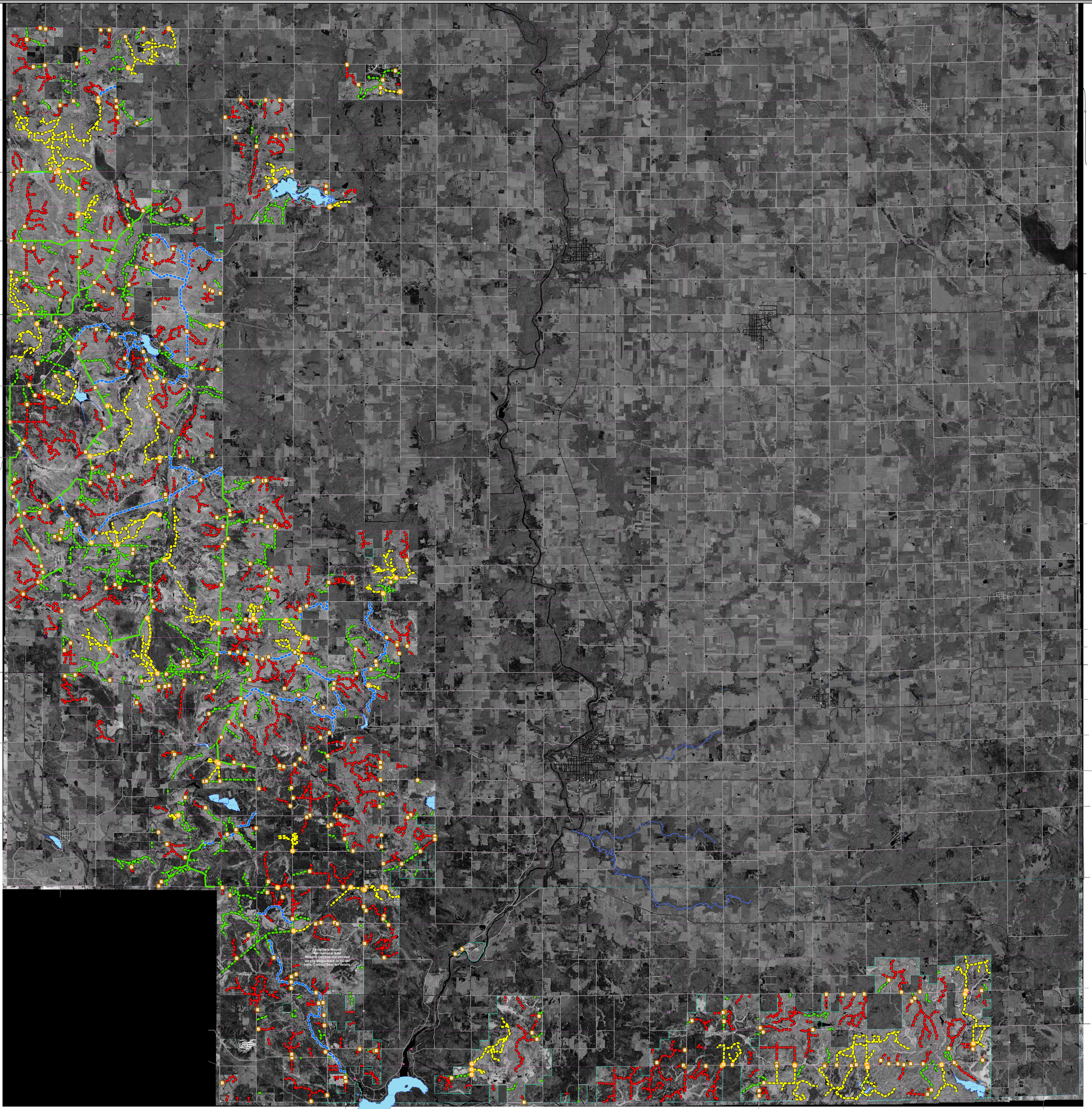


Clark County Forestry And Parks Mobility Device Access Map



***On and off trail
walk-in access
is allowed on
all County Forest
property**

- █ ALL licensed motor vehicles and ALL permitted devices
- █ ALL permitted vehicles & devices
- █ ONLY Permitted devices 50" wide or less
- █ WALK IN ONLY
No motor vehicles allowed

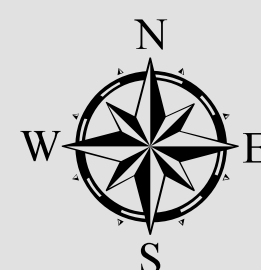
Color indicates what motor vehicle or mobility device access is allowed

- Section Boundaries
- County Forest Boundaries

- B Earthen Bunker/Berm
- G Gate

- ▲ Campground
- P ATV/Snowmobile Parking Lot
- P Horse Trail Parking Lot

- ~ Named Forest Roads - Maintained to town road standards
winter maintenance is not guaranteed
- ~ Woods Trails - Two-track woods trails, maintenance is not guaranteed or implied
- ~ Gated Trails - Gated two-track trails, maintenance not guaranteed or implied
- ~ ATV/Snow Trails - Groomed recreation trails, Use with EXTREME caution



Map Creation Date: January 1, 2019
This map is intended for advisory purposes only. It is based on sources believed to be reliable, but Clark County distributes this information on an "AS IS" basis. No warranties are implied.