



**CTH E – Dorchester**

**Br N Fork Popple River Bridge B-10-0261**

**CTH A**

**Clark County**

**Wisconsin Department of Transportation**

**Public Involvement Presentation**

**October / November 2023**

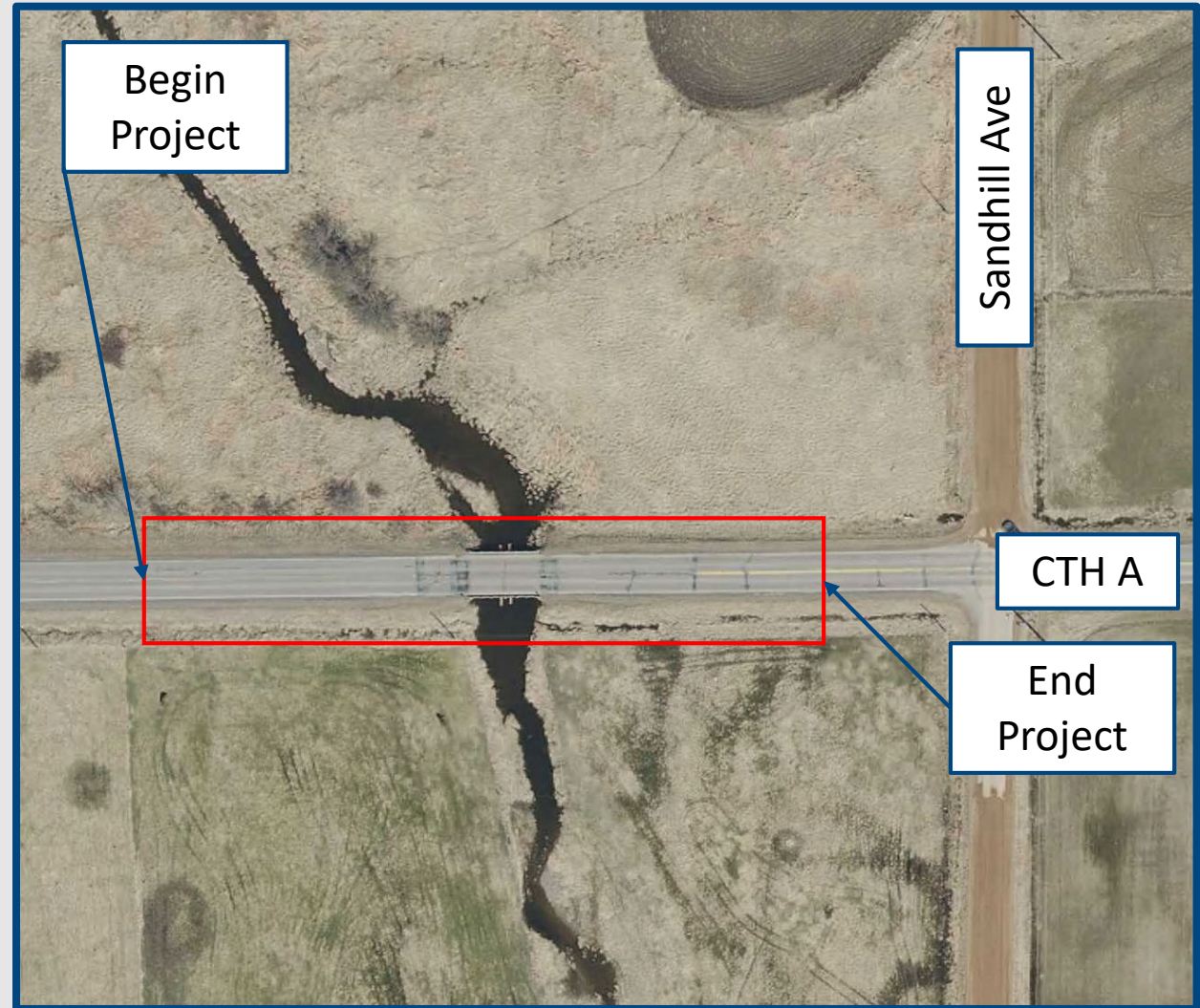
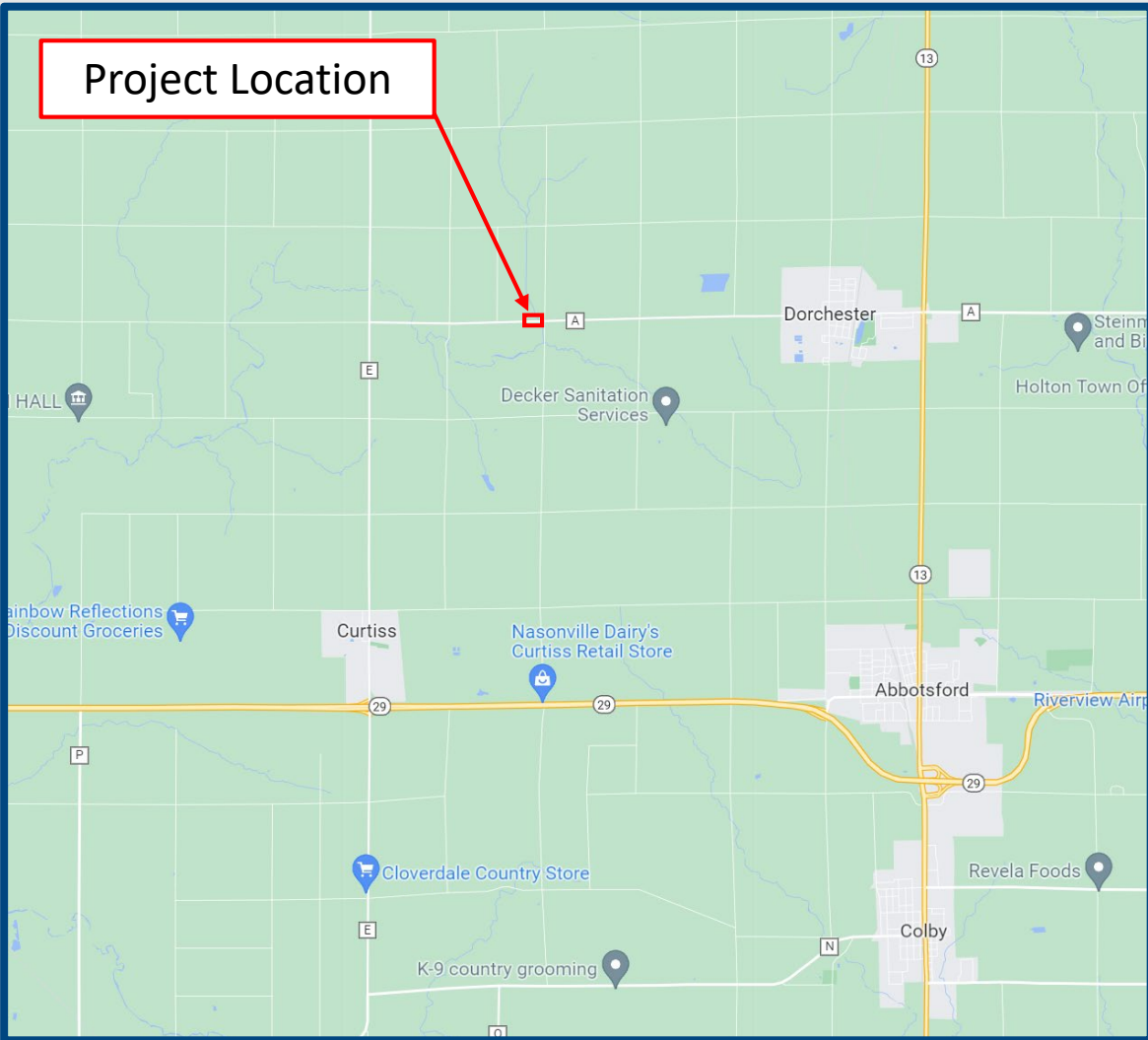
# Presentation Agenda

---

- Project Limits
- Project Need
- Proposed Design Overview
- Traffic Control
- Schedule
- Contact Information



# What are the project limits?



# Why do we need this project?

## Replace the Existing Bridge



- Two-span timber bridge
- 40.5-feet-long with a clear roadway width of 24.5 feet
- Sufficiency Rating = 49.0 out of 100
  - A bridge sufficiency rating is a numerical value computed from many factors to include the condition of the bridge. A bridge with a sufficiency rating of 100 is in perfect condition. Bridges with a rating less than 50 are eligible for replacement funding.
- Built in 1951



# Why do we need this project?

## Superstructure Deterioration



- Timber Slab
  - Decay / Rot
  - Splits
  - Checks

# Why do we need this project?

## Substructure Deterioration



- Timber Piles
  - Decay / Rot
  - Splits
  - Required Additional Support

# Why do we need this project?

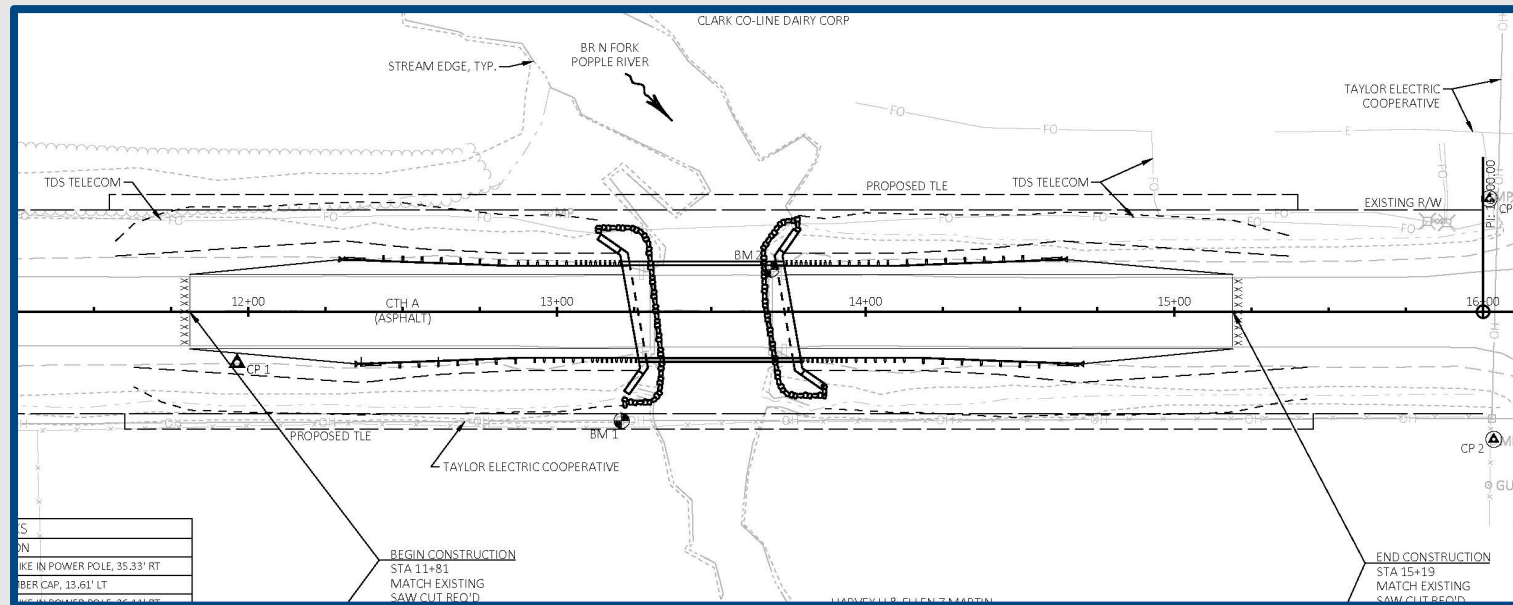
## Deck Deterioration / Clear Width



- Asphalt over Timber
  - Excessive Cracking
- Clear Width Between Rails
  - 24.5-ft width between rails does not meet current standards

# What improvements are proposed?

- Remove existing bridge.
- Construct a new single-span reinforced concrete flat slab bridge.
- Add approach beam guard.
- Reconstruct approximately 150-ft of each roadway approach.
- Right-of-Way acquisition is anticipated for shoulder widening and slopes.





# Proposed Design Overview

## New Bridge

- The new bridge is anticipated to be a 50-ft single-span reinforced concrete flat slab structure.
- The new bridge will have a 30-ft clear roadway width between the rails.



# Proposed Design Overview

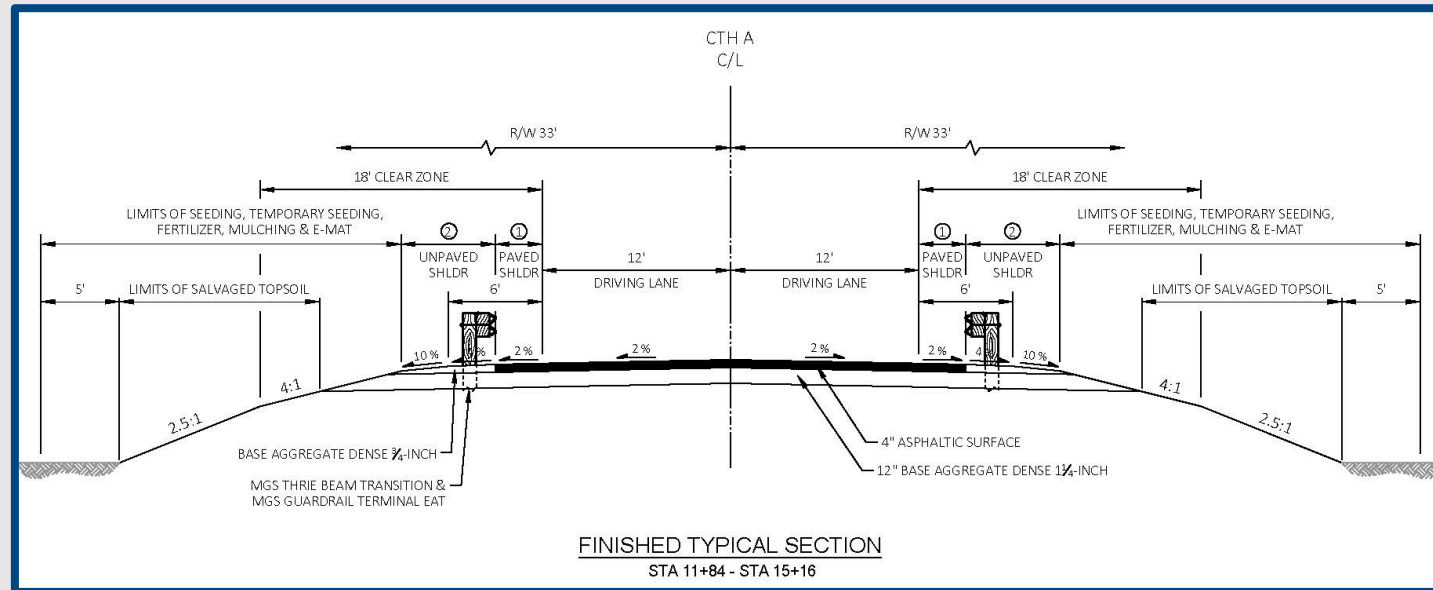
## Typical Section – CTH A

- Pavement

- Pave 4-inches of asphaltic surface over 12-inches of base aggregate dense

- 6-ft Shoulders

- 3-ft paved, 3-foot unpaved



# What will happen to CTH A traffic?

- CTH A will be closed to traffic during construction.
- No detour will be posted.



# Schedule

---

- Public comment solicitation: October 2023 - November 2023
- Final plan submittal: Nov. 1, 2025
- Construction: Summer 2026



# Project Contact Information

---

For any questions or comments feel free to contact either of the following individuals:

**Brian Duell – Clark County Highway Commissioner**

801 Clay St.

Neillsville, WI 54456

(715) 743-3680

Brian.Duell@co.clark.wi.us

**Aaron Palmer, P.E. – Consultant Project Manager**

Westbrook Associated Engineers, Inc.

P.O. Box 429

Spring Green, WI 53588

(608) 588-7866

apalmer@westbrookeng.com

